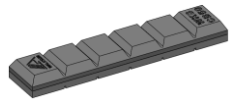


WEAR PRODUCTS-
BI-METAL / NI-HARD

INDEX



Chocky Bars 03
CB



Wear Buttons 04
WB



Wear Donuts 05
WD



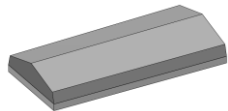
Standard Wear Bars 06
STB



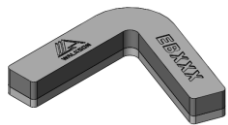
Skid Wear Bars 08
SKB1 SKB2 SKB3 SKB4



Shaped Wear Bars 09
SHB1 SHB2 SHB3 SHB4



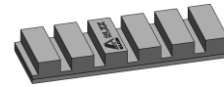
Grizzly Bars 12
GB1 GB2



Elbow Wear Bars 14
EB



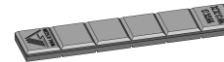
Wear Plates 15
WP WPT WPN



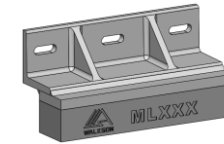
Rock-box Liners 18
RL



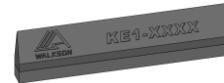
Shredder Hammer Tips 19
HT



Wafer Strips 21
WS



Micro-ledges 22
ML



Knife Edges 23
KE



Ni-Hard Liners 26
NL



Ni-Hard Billets 28
NB

Bimetallic Wear Products

WALKSON White Iron

WALKSON is a professional wear products supplier for mining and mineral processing industries. The bimetallic products are consisted of super high wear resistant material high chrome white iron (based on ASTM A532 15%CrMo) and weldable & high impact mild steel base plate through metallurgical bond-brazing. The final products have super high wear resistance property while retains good impact resistance property.

Table-1 Chemical Requirement, Weight %

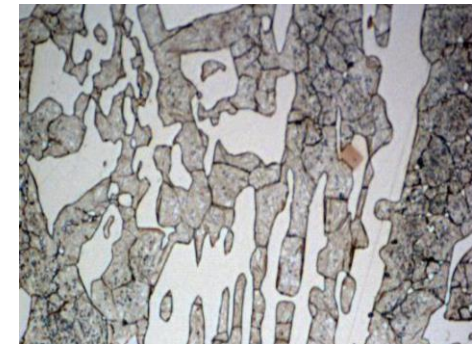
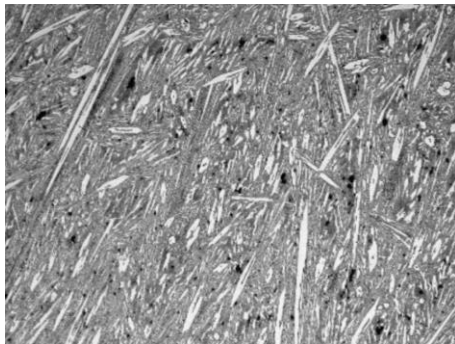
| C | Si | Mn | P | S |
|-------------|-----------|-----------|-----------|---------|
| 2.50~3.00 | 0.50~0.80 | 1.30~1.60 | ≤0.050 | ≤0.050 |
| Cr | Ni | Mo | Cu | Fe |
| 15.00~18.00 | ≤0.50 | 0.80~1.20 | 1.00~1.20 | Balance |

Table-2 Mechanical Property

| Tensile Strength | | Shear Strength | | Hardness | |
|------------------|--------|----------------|--------|----------|-----|
| Mpa | PSI | Mpa | PSI | HRC | BHN |
| ≥630 | ≥91350 | ≥250 | ≥36250 | 63 | 700 |

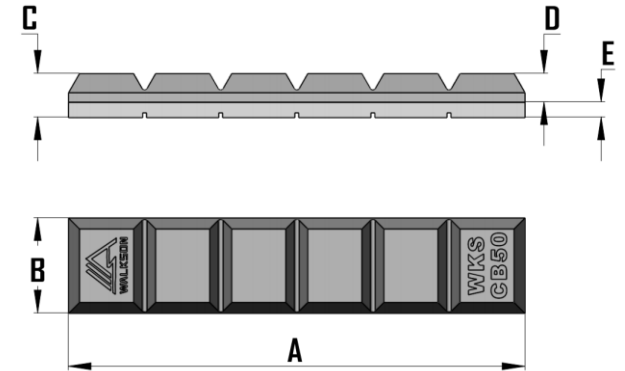
Micro-structure

WALKSON white iron final Micro-structure contains Carbide/Martensite and retained Austenite. The carbide content is around 41.4%.



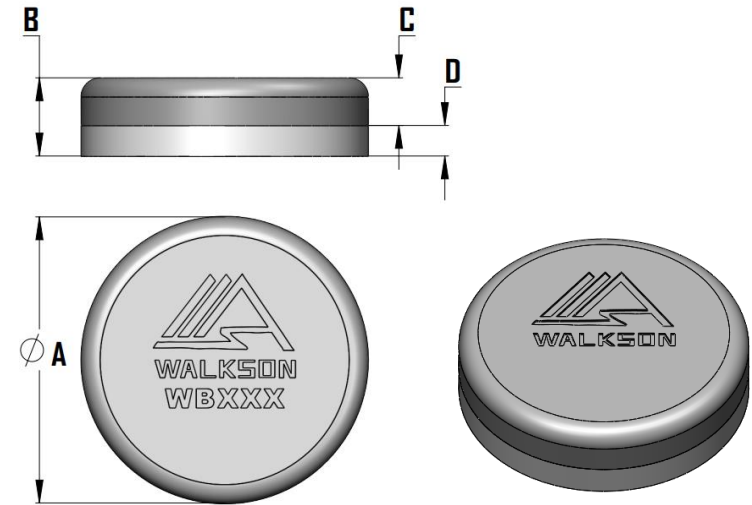
Chocky Bars

| ITEM NO. | | A | B | C | D | E | WEIGHT |
|----------|----------|--------|-------|-----|------|------|--------|
| CB25 | MM KG | 240 | 25 | 23 | 15 | 8 | 0.9 |
| | INCH LBS | 9-7/16 | 1 | 7/8 | 9/16 | 5/16 | 1.98 |
| CB40 | MM KG | 240 | 40 | 23 | 15 | 8 | 1.5 |
| | INCH LBS | 9-7/16 | 1-1/2 | 7/8 | 9/16 | 5/16 | 3.31 |
| CB50 | MM KG | 240 | 50 | 23 | 15 | 8 | 1.9 |
| | INCH LBS | 9-7/16 | 2 | 7/8 | 9/16 | 5/16 | 4.19 |
| CB65 | MM KG | 240 | 65 | 23 | 15 | 8 | 2.5 |
| | INCH LBS | 9-7/16 | 2-1/2 | 7/8 | 9/16 | 5/16 | 5.51 |
| CB80 | MM KG | 240 | 80 | 23 | 15 | 8 | 3.2 |
| | INCH LBS | 9-7/16 | 3-1/8 | 7/8 | 9/16 | 5/16 | 7.05 |
| CB90 | MM KG | 240 | 90 | 23 | 15 | 8 | 3.5 |
| | INCH LBS | 9-7/16 | 3-1/2 | 7/8 | 9/16 | 5/16 | 7.72 |
| CB100 | MM KG | 240 | 100 | 23 | 15 | 8 | 3.9 |
| | INCH LBS | 9-7/16 | 3-7/8 | 7/8 | 9/16 | 5/16 | 8.60 |
| CB130 | MM KG | 240 | 130 | 23 | 15 | 8 | 5.4 |
| | INCH LBS | 9-7/16 | 5-1/8 | 7/8 | 9/16 | 5/16 | 11.91 |
| CB150 | MM KG | 240 | 150 | 23 | 15 | 8 | 6.0 |
| | INCH LBS | 9-7/16 | 5-7/8 | 7/8 | 9/16 | 5/16 | 13.23 |



Wear Buttons

| ITEM NO. | | A | B | C | D | WEIGHT |
|----------|----------|--------|--------|-------|-----|--------|
| WB60 | MM KG | 60 | 27 | 17 | 10 | 0.7 |
| | INCH LBS | 2-3/8 | 1-1/16 | 5/8 | 3/8 | 1.54 |
| WB75 | MM KG | 75 | 27 | 17 | 10 | 0.8 |
| | INCH LBS | 3 | 1-1/16 | 5/8 | 3/8 | 1.76 |
| WB90 | MM KG | 90 | 27 | 17 | 10 | 1.4 |
| | INCH LBS | 3-9/19 | 1-1/16 | 11/16 | 3/8 | 3.09 |
| WB110 | MM KG | 110 | 32 | 20 | 12 | 2.1 |
| | INCH LBS | 4-5/16 | 1-1/4 | 13/16 | 1/2 | 4.63 |
| WB115 | MM KG | 115 | 32 | 20 | 12 | 2.5 |
| | INCH LBS | 4-1/2 | 1-1/4 | 3/4 | 1/2 | 5.51 |
| WB150 | MM KG | 150 | 41 | 25 | 16 | 5.7 |
| | INCH LBS | 5-7/8 | 1-5/8 | 1 | 5/8 | 12.57 |

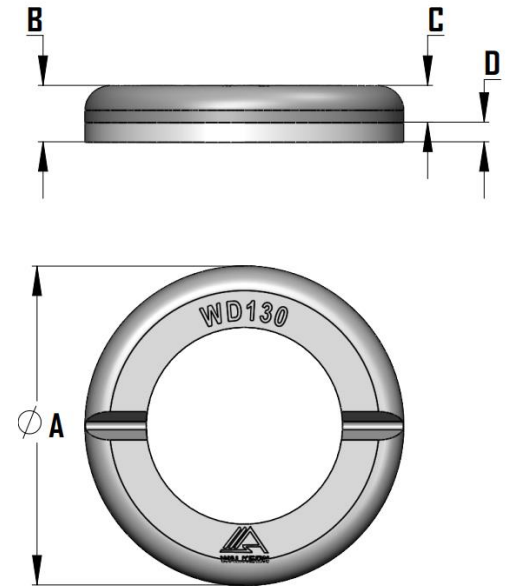


Other Types

This figure above shows flat top wear buttons. WALKSON can also provide Dome top and octagon wear buttons. All sizes are as per your requirement.

Wear Donuts

| ITEM NO. | | A | B | C | D | E | WEIGHT |
|----------|----------|---------|-------|-------|------|-------|--------|
| WD75 | MM KG | 75 | 25 | 17 | 8 | 25 | 0.7 |
| | INCH LBS | 2-15/16 | 1 | 11/16 | 5/16 | 1 | 1.54 |
| WD100A | MM KG | 100 | 25 | 17 | 8 | 50 | 1.0 |
| | INCH LBS | 3-15/16 | 1 | 11/16 | 5/16 | 2 | 2.20 |
| WD100B | MM KG | 100 | 32 | 24 | 8 | 70 | 1.0 |
| | INCH LBS | 3-15/16 | 1-1/4 | 15/16 | 5/16 | 2-3/4 | 2.20 |
| WD130 | MM KG | 130 | 23 | 15 | 8 | 80 | 1.3 |
| | INCH LBS | 5-1/8 | 7/8 | 9/16 | 5/16 | 3-1/8 | 2.87 |
| WD148 | MM KG | 148 | 35 | 25 | 10 | 108 | 2.2 |
| | INCH LBS | 5-13/16 | 1-3/8 | 1 | 3/8 | 4-1/4 | 4.85 |

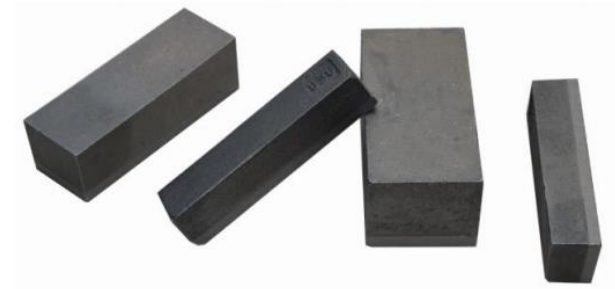
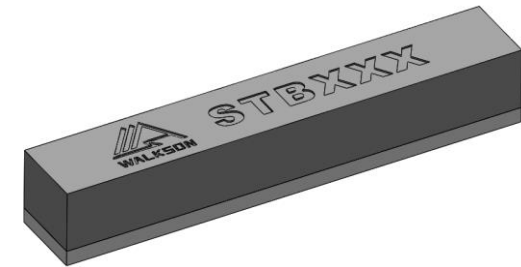
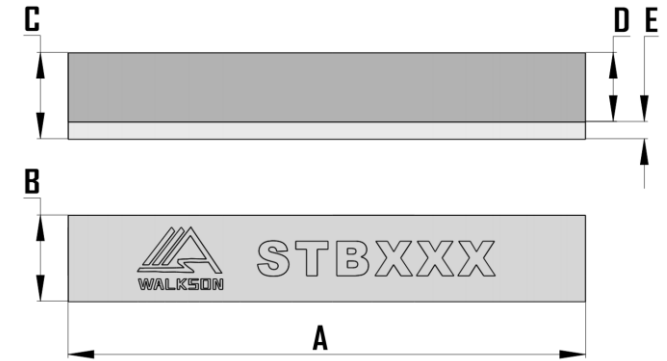


Main Advantages

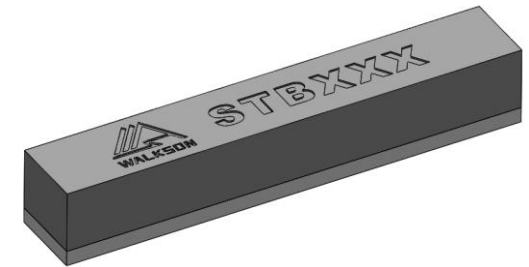
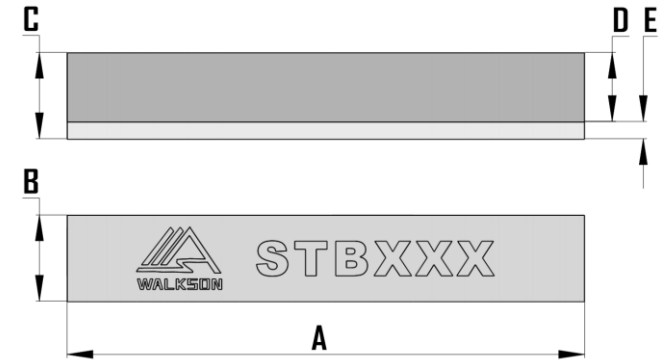
- ❑ A small sacrifice to maintain critical fasteners
- ❑ Can be scored and broken in two at the notched break point for situations when the wear comes from only one direction
- ❑ The Bolt Protectors will also pack with ore, increasing service life when used on a flat surface

Standard Wear Bars

| ITEM NO. | | A | B | C | D | E | WEIGHT |
|----------|----------|-------|---------|---------|--------|------|--------|
| STB115 | MM KG | 115 | 50 | 50 | 38 | 12 | 2.3 |
| | INCH LBS | 4-1/2 | 2 | 2 | 1-1/2 | 1/2 | 5.07 |
| STB127 | MM KG | 127 | 50 | 50 | 38 | 12 | 2.4 |
| | INCH LBS | 5 | 2 | 2 | 1-1/2 | 1/2 | 5.29 |
| STB150A | MM KG | 150 | 50 | 50 | 40 | 10 | 2.9 |
| | INCH LBS | 5-7/8 | 2 | 2 | 1-9/16 | 3/8 | 6.39 |
| STB150B | MM KG | 175 | 75 | 39 | 29 | 10 | 3.4 |
| | INCH LBS | 6-7/8 | 2-15/16 | 1-9/16 | 1-1/8 | 3/8 | 7.50 |
| STB150C | MM KG | 150 | 75 | 50 | 40 | 10 | 4.4 |
| | INCH LBS | 5-7/8 | 2-15/16 | 2 | 1-9/16 | 3/8 | 9.70 |
| STB150D | MM KG | 150 | 75 | 60 | 50 | 10 | 5.3 |
| | INCH LBS | 5-7/8 | 2-15/16 | 2-3/8 | 2 | 3/8 | 11.68 |
| STB153 | MM KG | 153 | 38 | 33 | 25 | 8 | 1.5 |
| | INCH LBS | 6 | 1-1/2 | 1-5/16 | 1 | 5/16 | 3.31 |
| STB200A | MM KG | 200 | 25 | 25 | 15 | 10 | 1.0 |
| | INCH LBS | 7-7/8 | 1 | 1 | 9/16 | 3/8 | 2.20 |
| STB200B | MM KG | 200 | 75 | 75 | 63 | 12 | 8.9 |
| | INCH LBS | 7-7/8 | 2-15/16 | 2-15/16 | 2-1/2 | 1/2 | 19.62 |
| STB190A | MM KG | 190 | 50 | 30 | 20 | 10 | 2.2 |
| | INCH LBS | 7-1/2 | 2 | 1-3/16 | 13/16 | 3/8 | 4.85 |

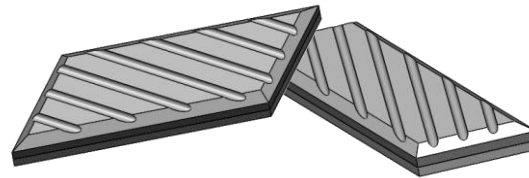
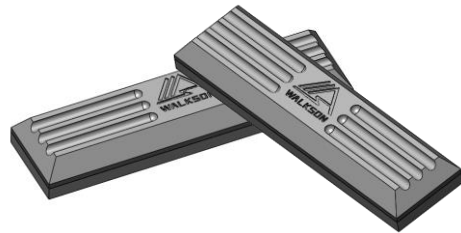
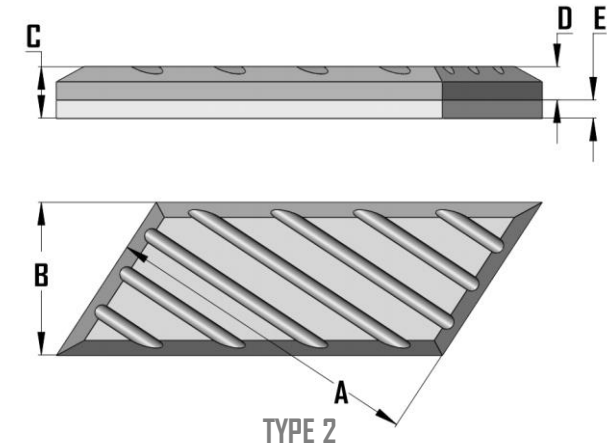
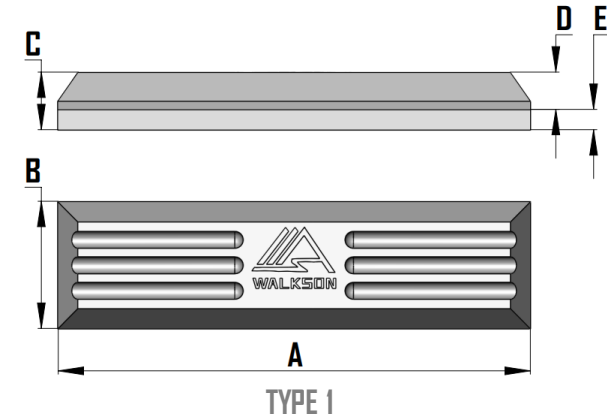


| ITEM NO. | | A | B | C | D | E | WEIGHT |
|----------|----------|----------|-------|--------|--------|------|--------|
| STB190B | MM KG | 190 | 50 | 50 | 40 | 10 | 3.7 |
| | INCH LBS | 7-1/2 | 2 | 2 | 1-9/16 | 3/8 | 8.16 |
| STB210 | MM KG | 210 | 50 | 50 | 38 | 12 | 4.1 |
| | INCH LBS | 8-1/4 | 2 | 2 | 1-1/2 | 1/2 | 9.04 |
| STB230 | MM KG | 230 | 50 | 50 | 38 | 12 | 4.5 |
| | INCH LBS | 9-1/16 | 2 | 2 | 1-1/2 | 1/2 | 9.92 |
| STB294 | MM KG | 294 | 50 | 50 | 40 | 10 | 5.8 |
| | INCH LBS | 11-9/16 | 2 | 2 | 1-9/16 | 3/8 | 12.79 |
| STB300A | MM KG | 300 | 25 | 25 | 15 | 10 | 1.5 |
| | INCH LBS | 11-13/16 | 1 | 1 | 9/16 | 3/8 | 3.31 |
| STB300B | MM KG | 300 | 38 | 33 | 25 | 8 | 3.0 |
| | INCH LBS | 11-13/16 | 1-1/2 | 1-5/16 | 1 | 5/16 | 6.61 |
| STB300C | MM KG | 300 | 50 | 50 | 40 | 10 | 5.9 |
| | INCH LBS | 11-13/16 | 2 | 2 | 1-9/16 | 3/8 | 13.01 |
| STB300D | MM KG | 300 | 150 | 60 | 48 | 12 | 21.1 |
| | INCH LBS | 11-13/16 | 5-7/8 | 2-3/8 | 1-7/8 | 1/2 | 46.52 |
| STB432 | MM KG | 432 | 50 | 50 | 38 | 12 | 8.5 |
| | INCH LBS | 17 | 2 | 2 | 1-1/2 | 1/2 | 18.74 |
| STB450 | MM KG | 450 | 38 | 31 | 25 | 6 | 4.2 |
| | INCH LBS | 17-11/16 | 1-1/2 | 1-1/4 | 1 | 1/4 | 9.26 |
| STB600 | MM KG | 600 | 50 | 50 | 38 | 12 | 11.8 |
| | INCH LBS | 23-5/8 | 2 | 2 | 1-1/2 | 1/2 | 26.01 |

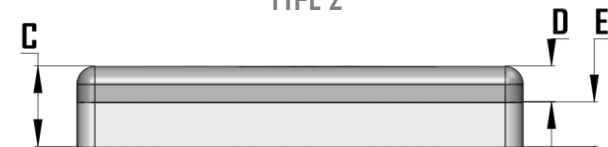
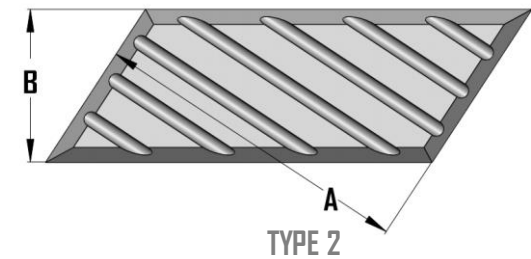
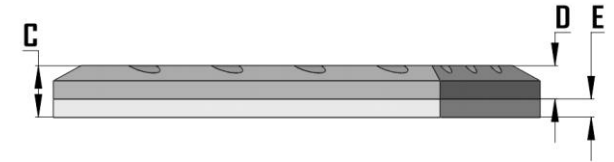
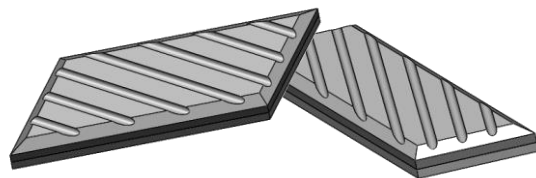


Skid Wear Bars

| ITEM NO. | | A | B | C | D | E | WEIGHT |
|-----------|----------|--------|----------|--------|-----|-----|--------|
| SKB1-154 | MM KG | 154 | 101 | 34 | 22 | 12 | 3.7 |
| | INCH LBS | 6-1/16 | 4 | 1-5/16 | 7/8 | 1/2 | 8.16 |
| SKB1-214 | MM KG | 214 | 101 | 34 | 22 | 12 | 5.1 |
| | INCH LBS | 8-7/16 | 4 | 1-5/16 | 7/8 | 1/2 | 11.24 |
| SKB1-279 | MM KG | 279 | 75 | 34 | 22 | 12 | 6.1 |
| | INCH LBS | 11 | 32-15/16 | 1-5/16 | 7/8 | 1/2 | 13.45 |
| SKB1-302 | MM KG | 302 | 101 | 34 | 22 | 12 | 7.3 |
| | INCH LBS | 11-7/8 | 4 | 1-5/16 | 7/8 | 1/2 | 16.09 |
| SKB2-154 | MM KG | 154 | 101 | 34 | 22 | 12 | 4.2 |
| | INCH LBS | 6-1/16 | 4 | 1-5/16 | 7/8 | 1/2 | 9.26 |
| SKB2-154R | MM KG | 154 | 101 | 34 | 22 | 12 | 4.2 |
| | INCH LBS | 6-1/16 | 4 | 1-5/16 | 7/8 | 1/2 | 9.26 |

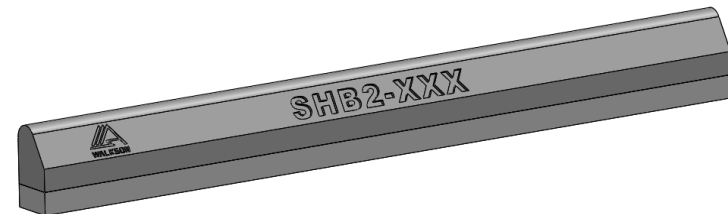
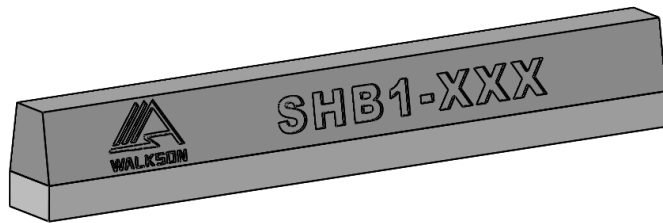
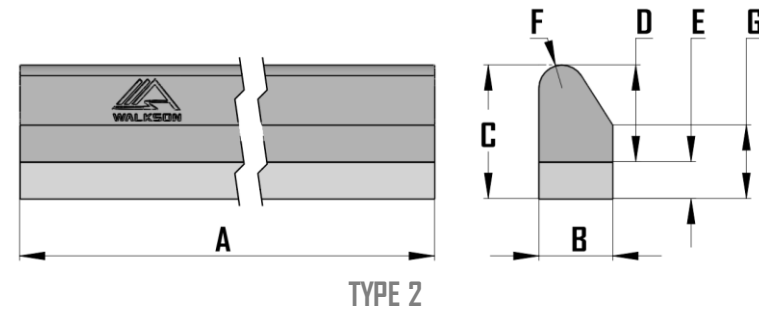
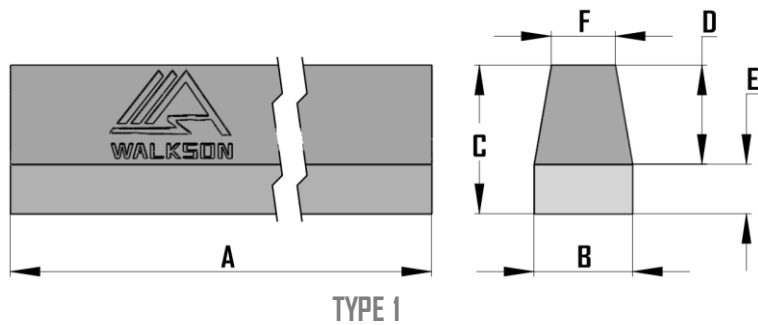


| ITEM NO. | | A | B | C | D | E | WEIGHT |
|-----------|----------|---------|---------|--------|-------|-----|--------|
| SKB2-214 | MM KG | 214 | 101 | 34 | 22 | 12 | 5.9 |
| | INCH LBS | 8-7/16 | 4 | 1-5/16 | 7/8 | 1/2 | 13.01 |
| SKB2-214R | MM KG | 214 | 101 | 34 | 22 | 12 | 5.9 |
| | INCH LBS | 8-7/16 | 4 | 1-5/16 | 7/8 | 1/2 | 13.01 |
| SKB2-302 | MM KG | 302 | 101 | 34 | 22 | 12 | 8.4 |
| | INCH LBS | 11-7/8 | 4 | 1-5/16 | 7/8 | 1/2 | 18.52 |
| SKB2-302R | MM KG | 302 | 101 | 34 | 22 | 12 | 8.4 |
| | INCH LBS | 11-7/8 | 4 | 1-5/16 | 7/8 | 1/2 | 18.52 |
| SKB3-200 | MM KG | 200 | 150 | 45 | 20 | 25 | 10.5 |
| | INCH LBS | 7-7/8 | 5-7/8 | 1-3/4 | 13/16 | 1 | 23.15 |
| SKB3-250A | MM KG | 250 | 150 | 45 | 20 | 25 | 13.1 |
| | INCH LBS | 9-13/16 | 5-7/8 | 1-3/4 | 13/16 | 1 | 28.88 |
| SKB3-250B | MM KG | 250 | 250 | 45 | 20 | 25 | 21.9 |
| | INCH LBS | 9-13/16 | 9-13/16 | 1-3/4 | 13/16 | 1 | 48.28 |

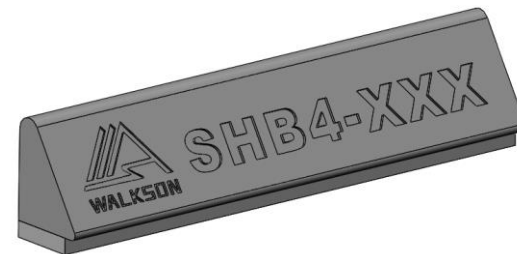
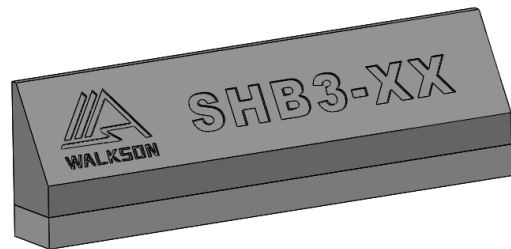
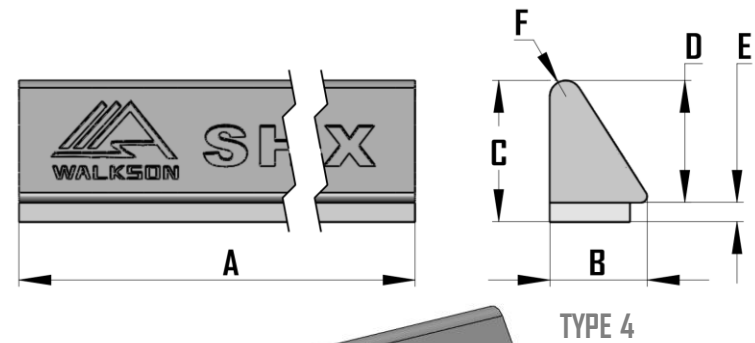
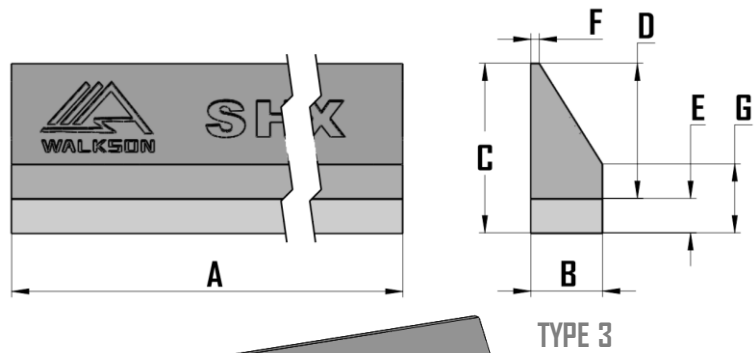


Shaped Wear Bars

| ITEM NO. | | A | B | C | D | E | F | G | WEIGHT |
|----------|----------|----------|-------|--------|-------|------|------|-----|--------|
| SHB1-200 | MM KG | 200 | 20 | 30 | 20 | 10 | 13 | - | 0.8 |
| | INCH LBS | 7-7/8 | 13/16 | 1-3/16 | 13/16 | 3/8 | 1/2 | - | 1.76 |
| SHB1-202 | MM KG | 202 | 25 | 35 | 25 | 10 | 10 | - | 1.1 |
| | INCH LBS | 7-15/16 | 1 | 1-3/8 | 1 | 3/8 | 3/8 | - | 2.43 |
| SHB1-244 | MM KG | 244 | 25 | 35 | 25 | 10 | 10 | - | 1.3 |
| | INCH LBS | 9-5/8 | 1 | 1-3/8 | 1 | 3/8 | 3/8 | - | 2.87 |
| SHB2-275 | MM KG | 275 | 16 | 29 | 21 | 8 | 5 | 16 | 0.9 |
| | INCH LBS | 10-13/16 | 5/8 | 1-1/8 | 13/16 | 5/16 | 3/16 | 5/8 | 1.98 |



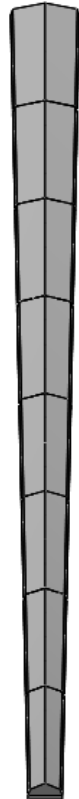
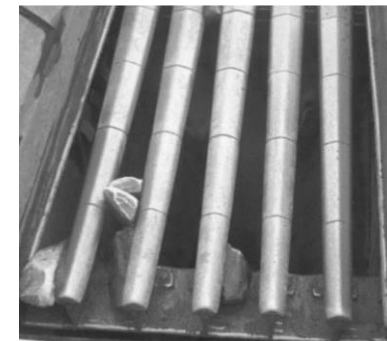
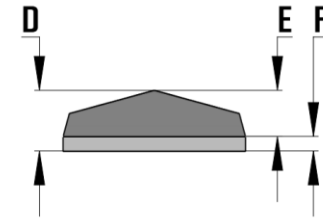
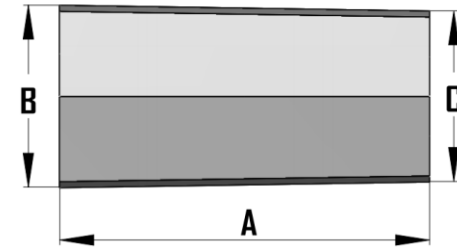
| ITEM NO. | | A | B | C | D | E | F | G | WEIGHT |
|----------|----------|--------|----|---------|-------|-----|-----|-------|--------|
| SHB3-200 | MM KG | 200 | 25 | 59 | 47 | 12 | 3 | 24 | 1.5 |
| | INCH LBS | 7-7/8 | 1 | 2-5/16 | 1-7/8 | 1/2 | 1/8 | 15/16 | 3.31 |
| SHB3-400 | MM KG | 400 | 25 | 59 | 47 | 12 | 3 | 24 | 2.9 |
| | INCH LBS | 15-3/4 | 1 | 2-5/16 | 1-7/8 | 1/2 | 1/8 | 15/16 | 6.39 |
| SHB4-200 | MM KG | 200 | 25 | 50 | 38 | 12 | 10 | - | 1.5 |
| | INCH LBS | 7-7/8 | 1 | 1-15/16 | 1-1/2 | 1/2 | 3/8 | - | 3.31 |
| SHB4-400 | MM KG | 400 | 25 | 50 | 38 | 12 | 10 | - | 2.9 |
| | INCH LBS | 15-3/4 | 1 | 1-15/16 | 1-1/2 | 1/2 | 3/8 | - | 6.39 |



Grizzly Bars

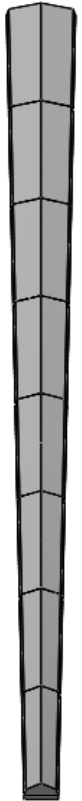
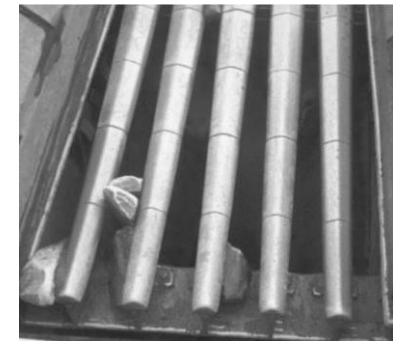
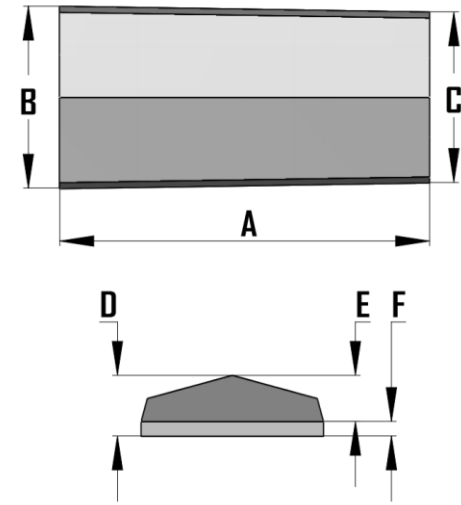
TYPE 1 - 150/50 TAPER

| ITEM NO. | | A | B | C | D | E | F | WEIGHT |
|----------|----------|-----|---------|---------|----|-------|-----|--------|
| GBI-150 | MM KG | 305 | 150 | 138 | 50 | 38 | 12 | 13.6 |
| | INCH LBS | 12 | 5-7/8 | 5-7/16 | 2 | 1-1/2 | 1/2 | 29.98 |
| GBI-138 | MM KG | 305 | 138 | 125 | 50 | 38 | 12 | 12.5 |
| | INCH LBS | 12 | 5-7/16 | 4-15/16 | 2 | 1-1/2 | 1/2 | 27.6 |
| GBI-125 | MM KG | 305 | 125 | 113 | 50 | 38 | 12 | 11.2 |
| | INCH LBS | 12 | 4-15/16 | 4-7/16 | 2 | 1-1/2 | 1/2 | 24.7 |
| GBI-113 | MM KG | 305 | 113 | 100 | 50 | 38 | 12 | 10.0 |
| | INCH LBS | 12 | 4-7/16 | 3-15/16 | 2 | 1-1/2 | 1/2 | 22.05 |
| GBI-100 | MM KG | 305 | 100 | 88 | 50 | 38 | 12 | 8.8 |
| | INCH LBS | 12 | 3-15/16 | 3-7/16 | 2 | 1-1/2 | 1/2 | 19.4 |
| GBI-88 | MM KG | 305 | 88 | 75 | 50 | 38 | 12 | 7.5 |
| | INCH LBS | 12 | 3-7/16 | 2-15/16 | 2 | 1-1/2 | 1/2 | 16.53 |
| GBI-75 | MM KG | 305 | 75 | 63 | 50 | 38 | 12 | 6.3 |
| | INCH LBS | 12 | 2-15/16 | 2-1/2 | 2 | 1-1/2 | 1/2 | 13.9 |
| GBI-50 | MM KG | 305 | 63 | 50 | 50 | 38 | 12 | 5.1 |
| | INCH LBS | 12 | 2-1/2 | 2 | 2 | 1-1/2 | 1/2 | 11.24 |



TYPE 2 - 150/75 TAPER

| ITEM NO. | | A | B | C | D | E | F | WEIGHT |
|----------|----------|-----|---------|---------|----|-------|-----|--------|
| GB2-150 | MM KG | 305 | 150 | 141 | 50 | 38 | 12 | 13.8 |
| | INCH LBS | 12 | 5-7/8 | 5-9/16 | 2 | 1-1/2 | 1/2 | 30.42 |
| GB2-141 | MM KG | 305 | 141 | 131 | 50 | 38 | 12 | 12.9 |
| | INCH LBS | 12 | 5-9/16 | 5-3/16 | 2 | 1-1/2 | 1/2 | 28.44 |
| GB2-131 | MM KG | 305 | 131 | 122 | 50 | 38 | 12 | 11.9 |
| | INCH LBS | 12 | 5-3/16 | 4-13/16 | 2 | 1-1/2 | 1/2 | 26.23 |
| GB2-122 | MM KG | 305 | 122 | 113 | 50 | 38 | 12 | 11.1 |
| | INCH LBS | 12 | 4-13/16 | 4-7/16 | 2 | 1-1/2 | 1/2 | 24.47 |
| GB2-113 | MM KG | 305 | 113 | 103 | 50 | 38 | 12 | 10.1 |
| | INCH LBS | 12 | 4-7/16 | 4-1/16 | 2 | 1-1/2 | 1/2 | 22.26 |
| GB2-103 | MM KG | 305 | 103 | 94 | 50 | 38 | 12 | 9.2 |
| | INCH LBS | 12 | 4-1/16 | 3-11/16 | 2 | 1-1/2 | 1/2 | 20.28 |
| GB2-94 | MM KG | 305 | 94 | 84 | 50 | 38 | 12 | 8.3 |
| | INCH LBS | 12 | 3-11/16 | 3-5/16 | 2 | 1-1/2 | 1/2 | 18.30 |
| GB2-84 | MM KG | 305 | 84 | 75 | 50 | 38 | 12 | 7.4 |
| | INCH LBS | 12 | 3-5/16 | 2-15/16 | 2 | 1-1/2 | 1/2 | 16.31 |



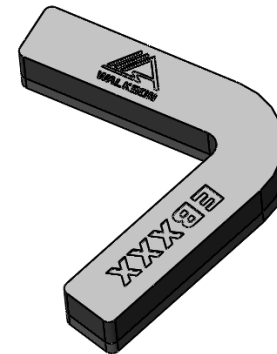
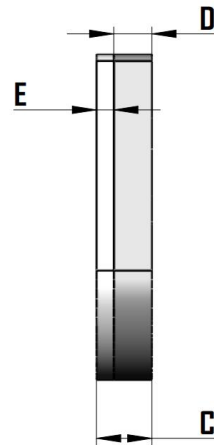
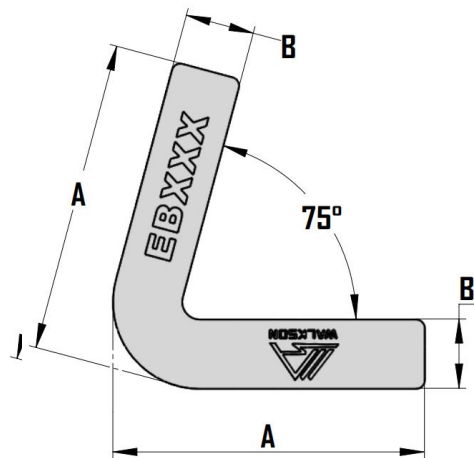
Elbow Wear Bars

| ITEM NO. | | A | B | C | D | E | WEIGHT |
|----------|----------|--------|--------|-------|-------|-----|--------|
| EB120 | MM KG | 120 | 30 | 28 | 18 | 10 | 1.3 |
| | INCH LBS | 4-3/4 | 1-3/16 | 1-1/8 | 11/16 | 3/8 | 2.87 |
| EB180 | MM KG | 180 | 40 | 32 | 22 | 10 | 3.0 |
| | INCH LBS | 7-1/16 | 1-9/16 | 1-1/4 | 7/8 | 3/8 | 6.61 |

Typical Applications

Apply to special shape wear-resisting layer to stand up to the toughest impact and wear abrasion.

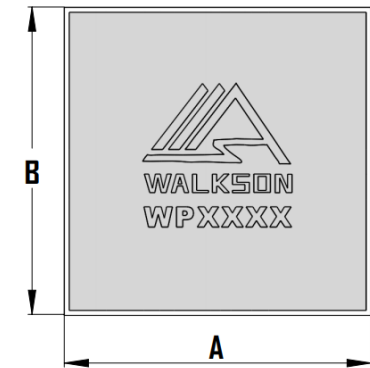
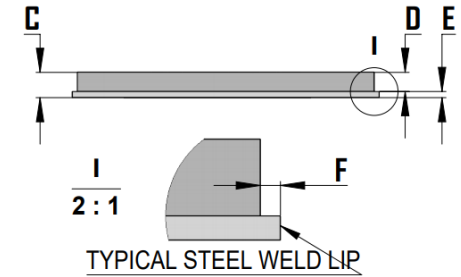
Ideal for buckets, rock boxes, truck bodies, chutes etc.



Wear Plates

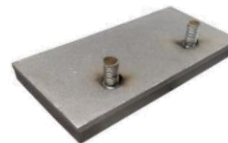
TYPE - Standard

| ITEM NO. | | A | B | C | D | E | F | WEIGHT |
|----------|----------|----------|---------|--------|-------|-----|------|--------|
| WP200A | MM KG | 200 | 200 | 18 | 12 | 6 | 5 | 5.7 |
| | INCH LBS | 7-7/8 | 7-7/8 | 11/16 | 1/2 | 1/4 | 3/16 | 12.57 |
| WP200B | MM KG | 200 | 200 | 20 | 14 | 6 | 5 | 6.3 |
| | INCH LBS | 7-7/8 | 7-7/8 | 13/16 | 9/16 | 1/4 | 3/16 | 13.90 |
| WP250 | MM KG | 250 | 250 | 20 | 14 | 6 | 5 | 9.8 |
| | INCH LBS | 9-13/16 | 9-13/16 | 13/16 | 9/16 | 1/4 | 3/16 | 21.61 |
| WP294A | MM KG | 294 | 144 | 30 | 20 | 10 | 5 | 10.2 |
| | INCH LBS | 11-9/16 | 5-11/16 | 1-3/16 | 13/16 | 3/8 | 3/16 | 22.50 |
| WP294B | MM KG | 294 | 294 | 30 | 20 | 10 | 5 | 20.4 |
| | INCH LBS | 11-9/16 | 11-9/16 | 1-3/16 | 13/16 | 3/8 | 3/16 | 45.00 |
| WP300A | MM KG | 300 | 150 | 20 | 14 | 6 | 5 | 7.0 |
| | INCH LBS | 11-13/16 | 5-7/8 | 13/16 | 9/16 | 1/4 | 3/16 | 15.43 |
| WP300B | MM KG | 300 | 150 | 25 | 19 | 6 | 5 | 8.8 |
| | INCH LBS | 11-13/16 | 5-7/8 | 1 | 3/4 | 1/4 | 3/16 | 19.40 |



Customization Options

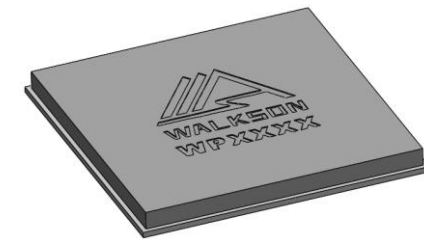
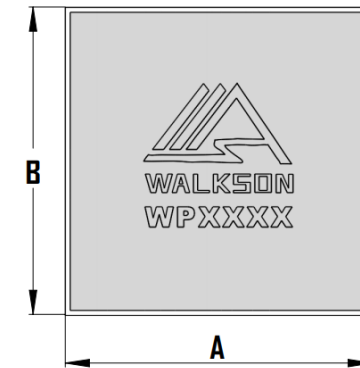
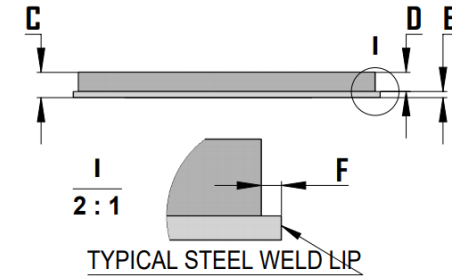
Available with plug weld holes / cast-in lifting lug / cast-in lifting nut / Weld-on stubs



Wear Plates

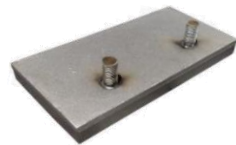
TYPE - Standard

| ITEM NO. | | A | B | C | D | E | F | WEIGHT |
|----------|----------|----------|----------|--------|-------|-----|------|--------|
| WP300C | MM KG | 300 | 150 | 30 | 20 | 10 | 5 | 10.6 |
| | INCH LBS | 11-13/16 | 5-7/8 | 1-3/16 | 13/16 | 3/8 | 3/16 | 23.37 |
| WP300D | MM KG | 300 | 200 | 28 | 18 | 10 | 5 | 13.2 |
| | INCH LBS | 11-13/16 | 7-7/8 | 1-1/8 | 11/16 | 3/8 | 3/16 | 29.10 |
| WP300E | MM KG | 300 | 300 | 18 | 12 | 6 | 5 | 12.7 |
| | INCH LBS | 11-13/16 | 11-13/16 | 11/16 | 1/2 | 1/4 | 3/16 | 28.00 |
| WP300F | MM KG | 300 | 300 | 20 | 14 | 6 | 5 | 14.1 |
| | INCH LBS | 11-13/16 | 11-13/16 | 13/16 | 9/16 | 1/4 | 3/16 | 31.10 |
| WP300G | MM KG | 300 | 300 | 25 | 19 | 6 | 5 | 17.7 |
| | INCH LBS | 11-13/16 | 11-13/16 | 1 | 3/4 | 1/4 | 3/16 | 39.02 |
| WP305 | MM KG | 305 | 150 | 24 | 18 | 6 | 5 | 8.6 |
| | INCH LBS | 12 | 5-7/8 | 15/16 | 11/16 | 1/4 | 3/16 | 18.96 |
| WP445 | MM KG | 445 | 445 | 25 | 19 | 6 | 5 | 38.9 |
| | INCH LBS | 17-1/2 | 17-1/2 | 1 | 3/4 | 1/4 | 3/16 | 85.76 |



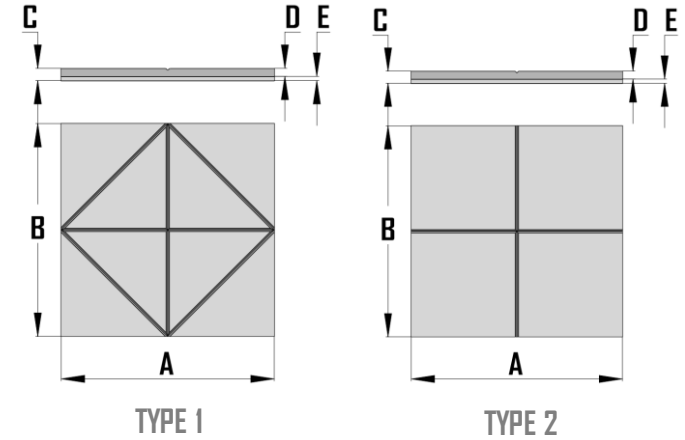
Customization Options

Available with plug weld holes / cast-in lifting lug / cast-in lifting nut / Weld-on stubs



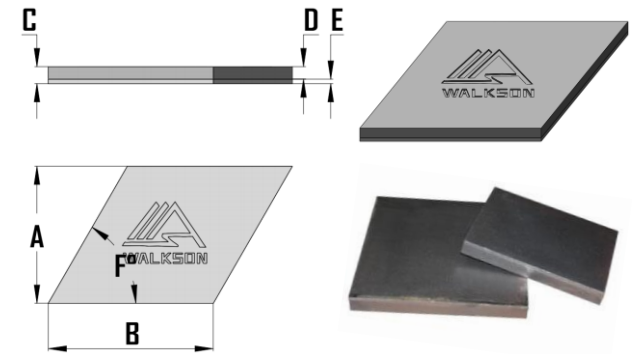
TYPE - Notched

| ITEM NO. | | A | B | C | D | E | WEIGHT |
|----------|----------|----------|----------|-----|------|------|--------|
| WPN1-400 | MM KG | 400 | 400 | 23 | 15 | 8 | 28.7 |
| | INCH LBS | 15-3/4 | 15-3/4 | 7/8 | 6/19 | 5/16 | 63.27 |
| WPN2-200 | MM KG | 200 | 200 | 12 | 6 | 6 | 3.8 |
| | INCH LBS | 7-7/8 | 7-7/8 | 1/2 | 1/4 | 1/4 | 8.38 |
| WPN2-300 | MM KG | 300 | 300 | 6 | 6 | 12 | 8.5 |
| | INCH LBS | 11-13/16 | 11-13/16 | 1/4 | 1/4 | 1/2 | 18.74 |



TYPE - Trapezoidal

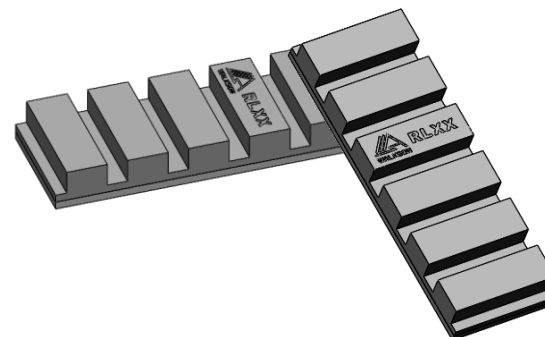
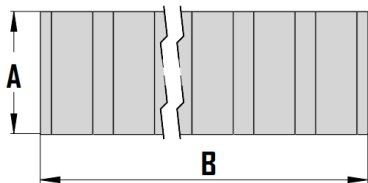
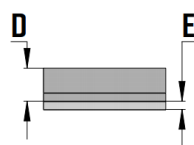
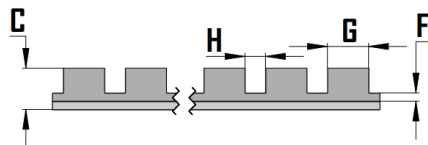
| ITEM NO. | | A | B | C | D | E | F | WEIGHT |
|----------|----------|-------|---------|--------|-------|------|----|--------|
| WPT190 | MM KG | 190 | 212.5 | 25 | 17 | 8 | 60 | 7.9 |
| | INCH LBS | 7-1/2 | 8-3/8 | 1 | 11/16 | 5/16 | 60 | 17.42 |
| WPT241 | MM KG | 241 | 290.5 | 30 | 22 | 8 | 60 | 19.5 |
| | INCH LBS | 9-1/2 | 11-7/16 | 1-3/16 | 7/8 | 5/16 | 60 | 43.00 |



WALKSON

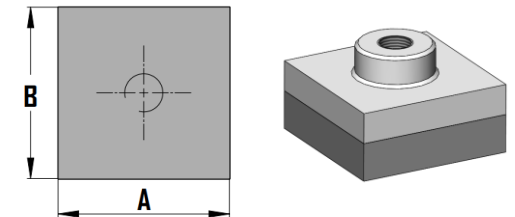
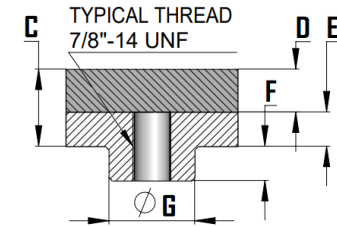
Rock-box Liners

| ITEM NO. | | A | B | C | D | E | F | G | H | WEIGHT |
|----------|----------|----------|----------|----|--------|-----|-----|----|----|--------|
| RL148A | MM KG | 148 | 452 | 50 | 40 | 10 | 10 | 50 | 25 | 21.1 |
| | INCH LBS | 5-13/16 | 17-13/16 | 2 | 1-9/16 | 3/8 | 3/8 | 2 | 1 | 46.52 |
| RL148B | MM KG | 148 | 300 | 50 | 40 | 10 | 10 | 50 | 25 | 14.0 |
| | INCH LBS | 5-13/16 | 11-13/16 | 2 | 1-9/16 | 3/8 | 3/8 | 2 | 1 | 30.86 |
| RL300A | MM KG | 300 | 300 | 50 | 40 | 10 | 10 | 50 | 25 | 28.7 |
| | INCH LBS | 11-13/16 | 11-13/16 | 2 | 1-9/16 | 3/8 | 3/8 | 2 | 1 | 63.27 |
| RL300B | MM KG | 300 | 148 | 50 | 40 | 10 | 10 | 50 | 25 | 13.8 |
| | INCH LBS | 11-13/16 | 5-13/16 | 2 | 1-9/16 | 3/8 | 3/8 | 2 | 1 | 30.42 |



Shredder Hammer Tips

| ITEM NO. | | A | B | C | D | E | F | G | WEIGHT |
|----------|----------|---------|---------|--------|-------|-------|-------|----|--------|
| HTI-50 | MM KG | 50 | 50 | 38 | 20 | 18 | 20 | 50 | 0.7 |
| | INCH LBS | 2 | 2 | 1-1/2 | 13/16 | 11/16 | 13/16 | 2 | 1.54 |
| HTI-64 | MM KG | 64 | 64 | 40 | 20 | 20 | 20 | 50 | 1.2 |
| | INCH LBS | 2-1/2 | 2-1/2 | 1-9/16 | 13/16 | 13/16 | 13/16 | 2 | 2.65 |
| HTI-80A | MM KG | 80 | 56 | 45 | 25 | 20 | 20 | 50 | 1.6 |
| | INCH LBS | 3-1/8 | 2-3/16 | 1-3/4 | 1 | 13/16 | 13/16 | 2 | 3.53 |
| HTI-80B | MM KG | 80 | 80 | 45 | 25 | 20 | 20 | 50 | 2.4 |
| | INCH LBS | 3-1/8 | 3-1/8 | 1-3/4 | 1 | 13/16 | 13/16 | 2 | 5.30 |
| HTI-90A | MM KG | 90 | 50 | 45 | 25 | 20 | 20 | 50 | 1.6 |
| | INCH LBS | 3-9/16 | 2 | 1-3/4 | 1 | 13/16 | 13/16 | 2 | 3.53 |
| HTI-90B | MM KG | 90 | 54 | 66 | 48 | 18 | 20 | 50 | 2.5 |
| | INCH LBS | 3-9/16 | 2-1/8 | 2-5/8 | 1-7/8 | 11/16 | 13/16 | 2 | 5.51 |
| HTI-90C | MM KG | 90 | 90 | 45 | 25 | 20 | 20 | 50 | 2.9 |
| | INCH LBS | 3-9/16 | 3-9/16 | 1-3/4 | 1 | 13/16 | 13/16 | 2 | 6.39 |
| HTI-100 | MM KG | 100 | 100 | 45 | 25 | 20 | 20 | 50 | 3.6 |
| | INCH LBS | 3-15/16 | 3-15/16 | 1-3/4 | 1 | 13/16 | 13/16 | 2 | 7.94 |

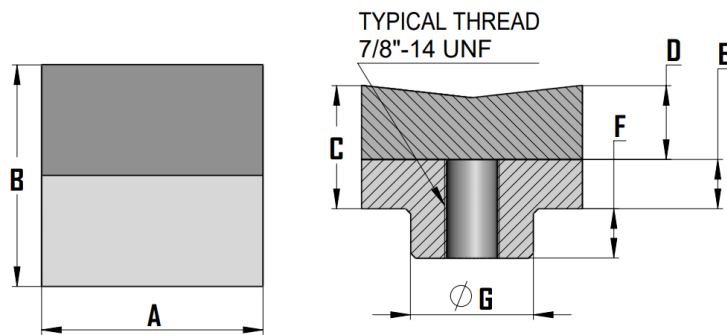
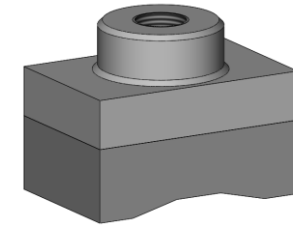
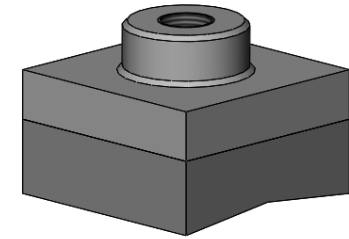


TYPE 1

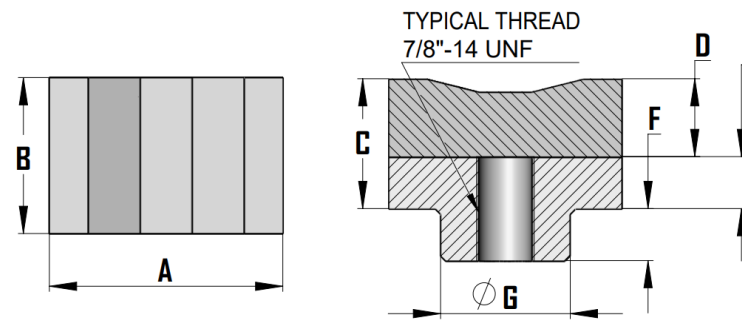


Shredder Hammer Tips

| ITEM NO. | | A | B | C | D | E | F | G | WEIGHT |
|----------|----------|--------|--------|--------|--------|-------|-------|----|--------|
| HT2-80 | MM KG | 80 | 56 | 50 | 30 | 20 | 20 | 50 | 1.8 |
| | INCH LBS | 3-1/8 | 2-3/16 | 2 | 1-3/16 | 13/16 | 13/16 | 2 | 3.97 |
| HT2-90 | MM KG | 90 | 90 | 50 | 30 | 20 | 20 | 50 | 3.0 |
| | INCH LBS | 3-9/16 | 3-9/16 | 2 | 1-3/16 | 13/16 | 13/16 | 2 | 6.61 |
| HT3-90A | MM KG | 90 | 50 | 55 | 35 | 20 | 20 | 50 | 1.8 |
| | INCH LBS | 3-9/16 | 2 | 2-3/16 | 1-3/8 | 13/16 | 13/16 | 2 | 3.97 |
| HT3-90B | MM KG | 90 | 56 | 55 | 35 | 20 | 20 | 50 | 1.9 |
| | INCH LBS | 3-9/16 | 2-3/16 | 2-3/16 | 1-3/8 | 13/16 | 13/16 | 2 | 4.19 |
| HT3-90C | MM KG | 90 | 90 | 50 | 30 | 20 | 20 | 50 | 3.0 |
| | INCH LBS | 3-9/16 | 3-9/16 | 2 | 1-3/16 | 13/16 | 13/16 | 2 | 6.61 |



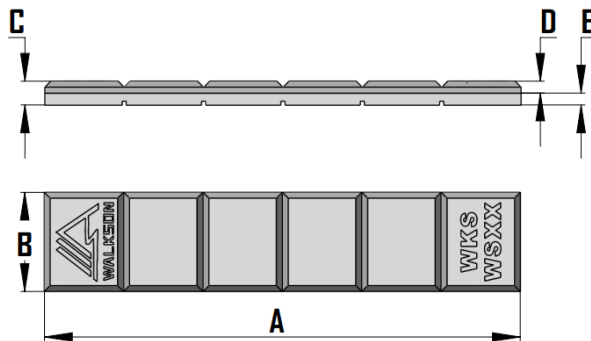
TYPE 2



TYPE 3

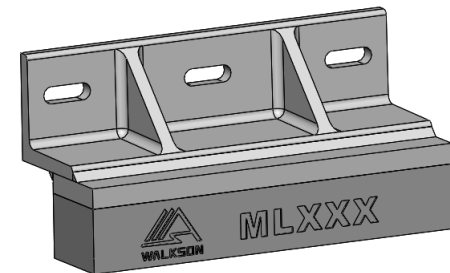
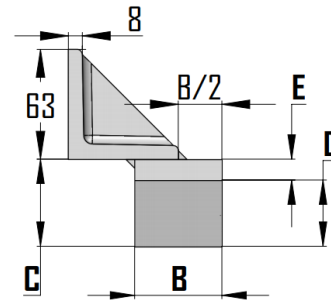
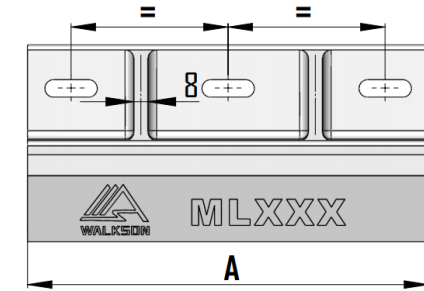
Wafer Strips

| ITEM NO. | | A | B | C | D | E | WEIGHT |
|----------|----------|--------|--------|-----|-----|-----|--------|
| WS25 | MM KG | 240 | 25 | 12 | 6 | 6 | 0.6 |
| | INCH LBS | 9-7/16 | 1 | 1/2 | 1/4 | 1/4 | 1.32 |
| WS40 | MM KG | 240 | 40 | 12 | 6 | 6 | 0.9 |
| | INCH LBS | 9-7/16 | 1-9/16 | 1/2 | 1/4 | 1/4 | 1.98 |
| WS50 | MM KG | 240 | 50 | 12 | 6 | 6 | 1.2 |
| | INCH LBS | 9-7/16 | 2 | 1/2 | 1/4 | 1/4 | 2.65 |
| WS65 | MM KG | 240 | 65 | 12 | 6 | 6 | 1.6 |
| | INCH LBS | 9-7/16 | 2-9/16 | 1/2 | 1/4 | 1/4 | 3.53 |



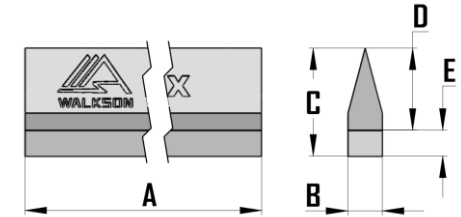
Micro-Ledges

| ITEM NO. | | A | B | C | D | E | WEIGHT |
|----------|----------|--------|----|----|--------|-----|--------|
| ML115 | MM KG | 115 | 50 | 50 | 40 | 10 | 3.2 |
| | INCH LBS | 4-1/2 | 2 | 2 | 1-9/16 | 3/8 | 7.05 |
| ML127 | MM KG | 127 | 50 | 50 | 38 | 12 | 3.6 |
| | INCH LBS | 5 | 2 | 2 | 1-1/2 | 1/2 | 7.94 |
| ML150 | MM KG | 150 | 50 | 50 | 40 | 10 | 4.2 |
| | INCH LBS | 5-7/8 | 2 | 2 | 1-9/16 | 3/8 | 9.26 |
| ML190 | MM KG | 190 | 50 | 50 | 38 | 12 | 5.5 |
| | INCH LBS | 7-1/2 | 2 | 2 | 1-1/2 | 1/2 | 12.13 |
| ML210 | MM KG | 210 | 50 | 50 | 38 | 12 | 6.0 |
| | INCH LBS | 8-1/4 | 2 | 2 | 1-1/2 | 1/2 | 13.23 |
| ML230 | MM KG | 230 | 50 | 50 | 38 | 12 | 6.6 |
| | INCH LBS | 9-1/16 | 2 | 2 | 1-1/2 | 1/2 | 14.55 |
| ML432 | MM KG | 432 | 50 | 50 | 38 | 12 | 12.5 |
| | INCH LBS | 17 | 2 | 2 | 1-1/2 | 1/2 | 27.56 |

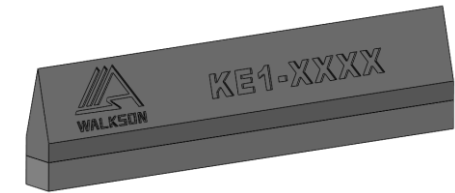


Knife Edges

| ITEM NO. | | A | B | C | D | E | WEIGHT |
|----------|----------|-----|-----|----|-------|-----|--------|
| KEI-203A | MM KG | 203 | 16 | 50 | 38 | 12 | 0.9 |
| | INCH LBS | 8 | 5/8 | 2 | 1-1/2 | 1/2 | 1.98 |
| KEI-203B | MM KG | 203 | 19 | 50 | 38 | 12 | 1.1 |
| | INCH LBS | 8 | 3/4 | 2 | 1-1/2 | 1/2 | 2.43 |
| KEI-203C | MM KG | 203 | 22 | 50 | 38 | 12 | 1.3 |
| | INCH LBS | 8 | 7/8 | 2 | 1-1/2 | 1/2 | 2.87 |
| KEI-203D | MM KG | 203 | 25 | 50 | 38 | 12 | 1.5 |
| | INCH LBS | 8 | 1 | 2 | 1-1/2 | 1/2 | 3.31 |
| KEI-305A | MM KG | 305 | 16 | 50 | 38 | 12 | 1.4 |
| | INCH LBS | 12 | 5/8 | 2 | 1-1/2 | 1/2 | 3.09 |
| KEI-305B | MM KG | 305 | 19 | 50 | 38 | 12 | 1.6 |
| | INCH LBS | 12 | 3/4 | 2 | 1-1/2 | 1/2 | 3.53 |
| KEI-305C | MM KG | 305 | 22 | 50 | 38 | 12 | 1.9 |
| | INCH LBS | 12 | 7/8 | 2 | 1-1/2 | 1/2 | 4.19 |
| KEI-305D | MM KG | 305 | 25 | 50 | 38 | 12 | 2.2 |
| | INCH LBS | 12 | 1 | 2 | 1-1/2 | 1/2 | 4.85 |

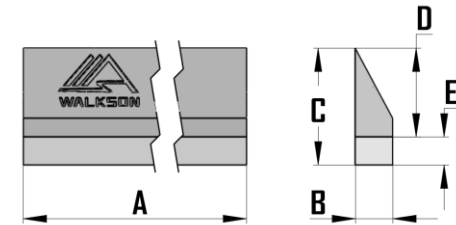


TYPE I

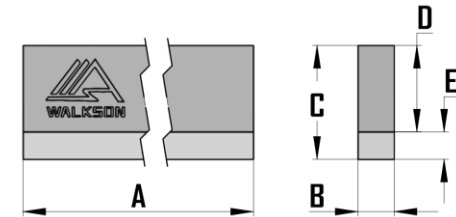


Knife Edges

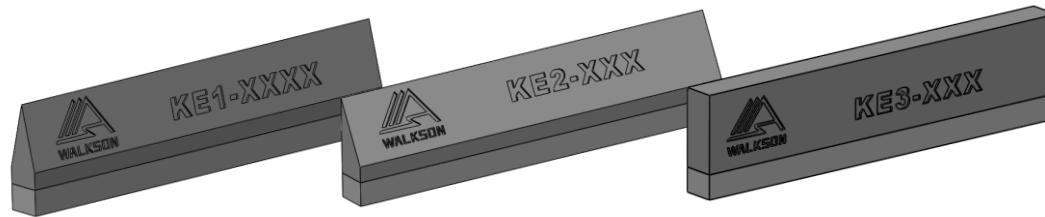
| ITEM NO. | | A | B | C | D | E | WEIGHT |
|----------|----------|-----|-------|--------|--------|-----|--------|
| KE2-203A | MM KG | 203 | 16 | 50 | 38 | 12 | 1.0 |
| | INCH LBS | 8 | 5/8 | 2 | 1-1/2 | 1/2 | 2.20 |
| KE2-203B | MM KG | 203 | 25 | 62 | 50 | 12 | 1.7 |
| | INCH LBS | 8 | 1 | 2-7/16 | 2 | 1/2 | 3.75 |
| KE2-305 | MM KG | 305 | 25 | 56 | 40 | 16 | 2.5 |
| | INCH LBS | 8 | 1 | 2-3/16 | 1-9/16 | 5/8 | 5.51 |
| KE3-203A | MM KG | 203 | 19 | 50 | 38 | 12 | 1.6 |
| | INCH LBS | 8 | 3/4 | 2 | 1-1/2 | 1/2 | 3.53 |
| KE3-203B | MM KG | 203 | 25 | 50 | 38 | 12 | 2.1 |
| | INCH LBS | 8 | 1 | 2 | 1-1/2 | 1/2 | 4.63 |
| KE3-203C | MM KG | 203 | 28 | 50 | 38 | 12 | 2.3 |
| | INCH LBS | 8 | 1-1/8 | 2 | 1-1/2 | 1/2 | 5.07 |



TYPE 2



TYPE 3



Ni-Hard Wear Products

WALKSON primarily supplies Ni-hard liners and Ni-hard billets produced to Ni-Hard 4 specification. Custom made size is available.

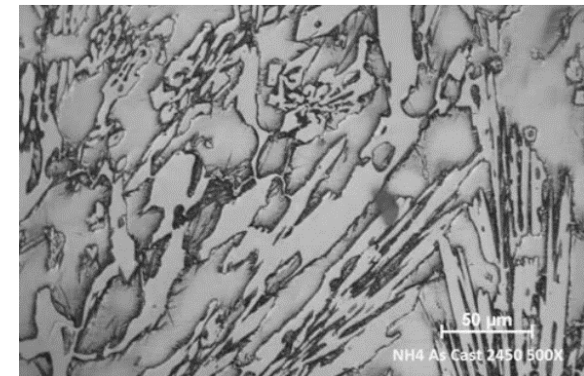
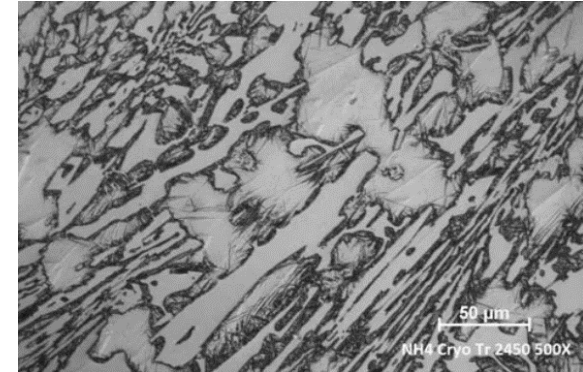
Ni-Hard 4 is a Nickel-Chromium white cast iron which provides consistent wear life in a variety of applications including slurry pumps, mill liners, pipe fittings, wear backs, log teeth, pulverized parts and other wear resistant castings. The Microstructure contains a multitude of refined carbides which make an important contribution to its abrasion resistance. The high chromium level and near eutectic composition of Ni-Hard 4 results in very hard, discontinuous carbides of the $(Cr,Fe)7C3$ type with the advantage of a lower carbon, extremely tough, High-Nickel martensite matrix.

TABLE 1 Chemical Requirement, Weight %

| C | Si | Mn | P | S |
|------------|-----------|-----------|-----------|-----------|
| 2.50~3.60 | ≤2.0 | ≤2.0 | ≤0.10 | ≤0.15 |
| Cr | Ni | Mo | Cu | Fe |
| 7.00~11.00 | 4.5-7.0 | ≤1.5 | - | Balance |

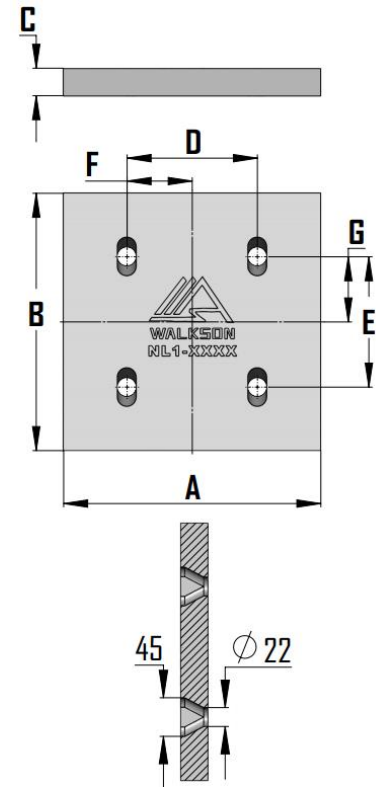
TABLE 2 Mechanical Property

| Density | | Bulk Hardness | Carbide Hardness | Volume Fraction of Carbides |
|-------------------|---------------------|----------------------|-------------------------|------------------------------------|
| Kg/m ³ | Lbs/in ³ | HV 50 | HV 0.5 | % |
| 7750 | 0.280 | 600-700 | ≥1201 | 20-25 |

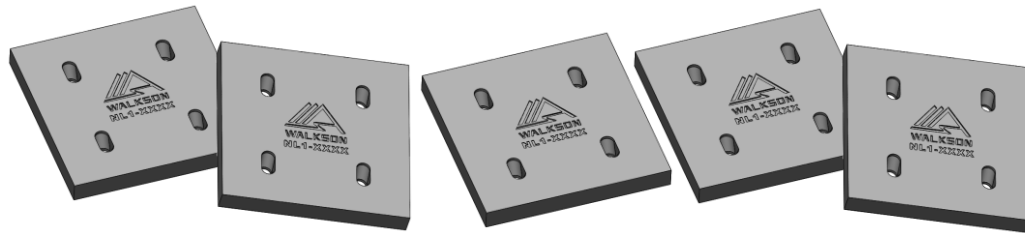


Ni-Hard Liners

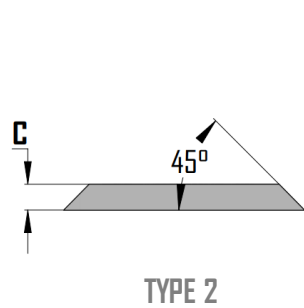
| ITEM NO. | | A | B | C | D | E | F | G | WEIGHT |
|----------|----------|----------|---------|-------|---------|---------|-------|-------|--------|
| NLI-200A | MM KG | 200 | 100 | 20 | 75 | 75 | 37.5 | 37.5 | 3.0 |
| | INCH LBS | 7-7/8 | 3-15/16 | 13/16 | 2-15/16 | 2-15/16 | 1-1/2 | 1-1/2 | 6.61 |
| NLI-200B | MM KG | 200 | 100 | 32 | 75 | 75 | 37.5 | 37.5 | 4.7 |
| | INCH LBS | 7-7/8 | 3-15/16 | 1-1/4 | 2-15/16 | 2-15/16 | 1-1/2 | 1-1/2 | 10.36 |
| NLI-300A | MM KG | 300 | 100 | 20 | 152 | 152 | 76 | 76 | 4.5 |
| | INCH LBS | 11-13/16 | 3-15/16 | 13/16 | 6 | 6 | 3 | 3 | 9.92 |
| NLI-300B | MM KG | 300 | 100 | 32 | 152 | 152 | 76 | 76 | 7.2 |
| | INCH LBS | 11-13/16 | 3-15/16 | 1-1/4 | 6 | 6 | 3 | 3 | 15.87 |
| NLI-300C | MM KG | 300 | 150 | 20 | 152 | 152 | 76 | 76 | 6.9 |
| | INCH LBS | 11-13/16 | 5-7/8 | 13/16 | 6 | 6 | 3 | 3 | 15.21 |
| NLI-300D | MM KG | 300 | 150 | 32 | 152 | 152 | 76 | 76 | 11.0 |
| | INCH LBS | 11-13/16 | 5-7/8 | 1-1/4 | 6 | 6 | 3 | 3 | 24.25 |



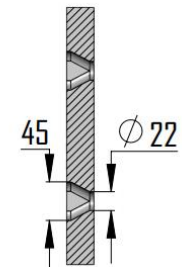
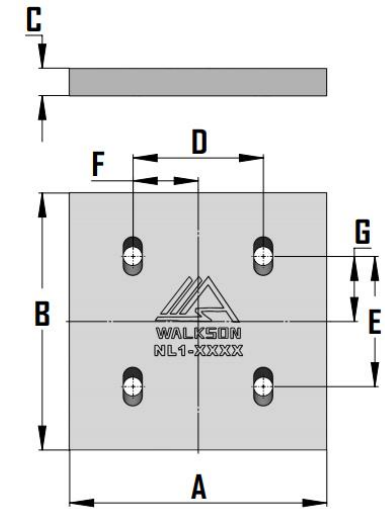
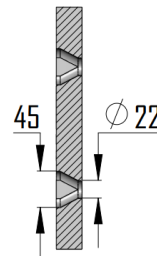
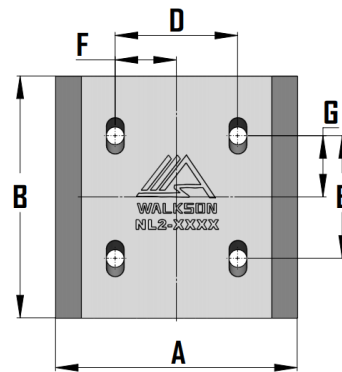
TYPE I



| ITEM NO. | | A | B | C | D | E | F | G | WEIGHT |
|----------|----------|----------|----------|-------|-----|-----|----|----|--------|
| NLI-300E | MM KG | 300 | 200 | 20 | 152 | 152 | 76 | 76 | 9.2 |
| | INCH LBS | 11-13/16 | 7-7/8 | 13/16 | 6 | 6 | 3 | 3 | 20.28 |
| NLI-300F | MM KG | 300 | 200 | 32 | 152 | 152 | 76 | 76 | 14.8 |
| | INCH LBS | 11-13/16 | 7-7/8 | 1-1/4 | 6 | 6 | 3 | 3 | 32.63 |
| NLI-300G | MM KG | 300 | 300 | 20 | 152 | 152 | 76 | 76 | 13.8 |
| | INCH LBS | 11-13/16 | 11-13/16 | 13/16 | 6 | 6 | 3 | 3 | 30.42 |
| NLI-300H | MM KG | 300 | 300 | 32 | 152 | 152 | 76 | 76 | 22.0 |
| | INCH LBS | 11-13/16 | 11-13/16 | 1-1/4 | 6 | 6 | 3 | 3 | 48.50 |
| NL2-300A | MM KG | 300 | 300 | 20 | 152 | 152 | 76 | 76 | 12.8 |
| | INCH LBS | 11-13/16 | 11-13/16 | 13/16 | 6 | 6 | 3 | 3 | 28.22 |
| NL2-300B | MM KG | 300 | 300 | 32 | 152 | 152 | 76 | 76 | 19.6 |
| | INCH LBS | 11-13/16 | 11-13/16 | 1-1/4 | 6 | 6 | 3 | 3 | 43.21 |



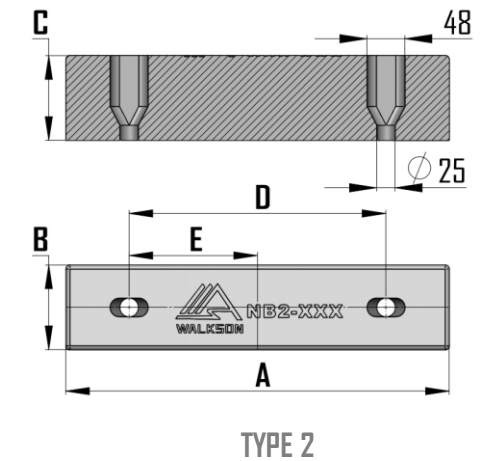
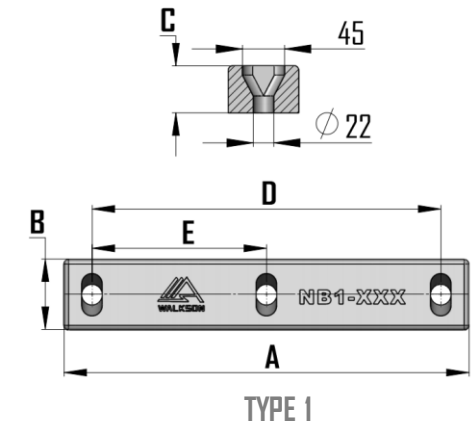
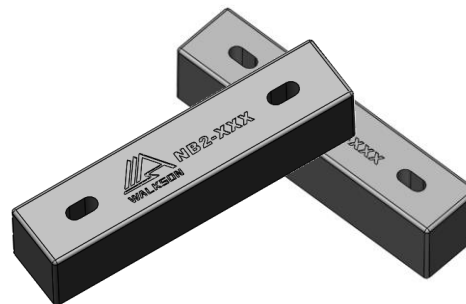
TYPE 2



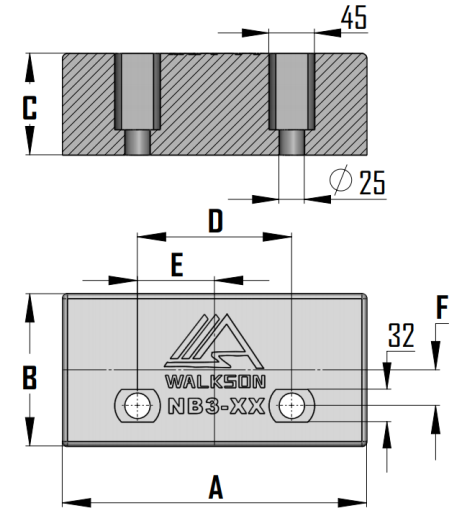
TYPE 1

Ni-Hard Billets

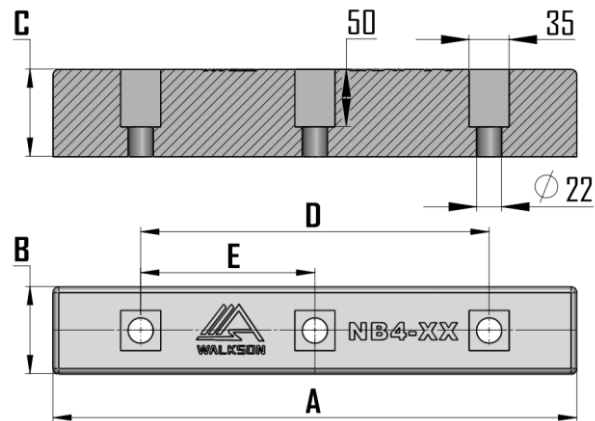
| ITEM NO. | | A | B | C | D | E | Bolt | WEIGHT |
|----------|----------|--------|---------|---------|---------|---------|--------------|--------|
| NBI-128 | MM KG | 128 | 75 | 50 | 68 | 34 | M20 Fishtail | 3.3 |
| | INCH LBS | 5-1/16 | 2-15/16 | 2 | 2-11/16 | 1-5/16 | | 7.28 |
| NBI-210 | MM KG | 210 | 75 | 50 | 150 | 75 | M20 Fishtail | 5.7 |
| | INCH LBS | 8-1/4 | 2-15/16 | 2 | 5-7/8 | 2-15/16 | | 12.57 |
| NBI-432 | MM KG | 432 | 75 | 50 | 372 | 186 | M20 Fishtail | 12.0 |
| | INCH LBS | 17 | 2-15/16 | 2 | 14-5/8 | 7-5/16 | | 26.46 |
| NB2-302 | MM KG | 302 | 100 | 100 | 152 | 76 | M22 Fishtail | 22.0 |
| | INCH LBS | 11-7/8 | 3-15/16 | 3-15/16 | 6 | 3 | | 48.50 |
| NB2-454 | MM KG | 454 | 100 | 100 | 304 | 152 | M22 Fishtail | 33.8 |
| | INCH LBS | 17-7/8 | 3-15/16 | 3-15/16 | 12 | 6 | | 74.52 |



| ITEM NO. | | A | B | C | D | E | F | Bolt | WEIGHT |
|----------|----------|----------|-------|---------|-----|-------|-------|-----------------|--------|
| NB3-224 | MM KG | 224 | 150 | 100 | 76 | 38 | 35 | M20 HEX Head | 24.5 |
| | INCH LBS | 8-13/16 | 5-7/8 | 3-15/16 | 3 | 1-1/2 | 1-3/8 | | 54.01 |
| NB3-300 | MM KG | 300 | 150 | 100 | 152 | 76 | 35 | M20 HEX Head | 33.4 |
| | INCH LBS | 11-13/16 | 5-7/8 | 3-15/16 | 6 | 3 | 1-3/8 | | 73.63 |
| NB4-305 | MM KG | 305 | 76 | 76 | 152 | 76 | - | M20 Square Head | 12.5 |
| | INCH LBS | 12 | 3 | 3 | 6 | 3 | - | | 27.56 |
| NB4-457 | MM KG | 457 | 76 | 76 | 304 | 152 | - | M20 Square Head | 18.8 |
| | INCH LBS | 18 | 3 | 3 | 12 | 6 | - | | 41.45 |



TYPE 3



TYPE 4

